

DISTRIBUTED BY  
**COLTERLEC™**

**TROAX®**

# DATA CENTRE ENCLOSURES

PROTECTING AND PARTITIONING  
SERVER ROOMS

PROTECTING PEOPLE, PROPERTY, AND PROCESSES.

# DATA CENTRE

- A COST-EFFECTIVE AND FLEXIBLE SOLUTION.
- ADAPTABLE TO FIT ANY HEIGHT.
- CAN BE COMBINED WITH OUR MESH CEILINGS.
- ALLOWS PROPER AIR CIRCULATION, LIGHT AND SPRINKLER PENETRATION.



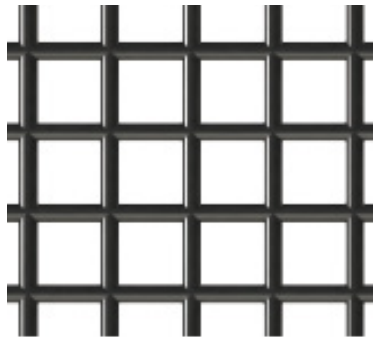
# SECURE THE SENSITIVE.

High safety standards in data server environments is crucial. Troax data centre enclosures offer enhanced physical protection solutions. The mesh panels, made of durable materials, creates a strong barrier around server racks. This helps preventing unauthorised physical access by providing a robust protection effective against tampering.

# VERSATILE MESH PANEL OPTIONS.

Our systems are available in mesh panel configurations. Our standard mesh is a 50x50mm (2 inch) aperture mesh panel welded to the frame. Other popular mesh sizes are 25x25mm (1 inch) and 12.7x12.7mm (1/2 inch). Our welded wire mesh thicknesses are between 2.5mm and 3.75mm.

**12.7 mm MESH PANEL**



**25 mm MESH PANEL**



**50 mm MESH PANEL**



Other mesh sizes are available upon request. Please contact us for further details or guidance.

# ALTERNATIVE SHEET PANEL OPTIONS.

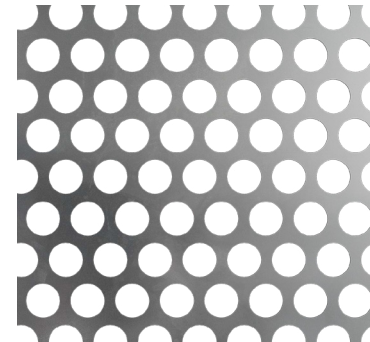
Perforated sheets are made from sheet steel that has patterns punched out of it.

These holes can be straight rows or staggered to increase the amount of the openings, depending on your aesthetic requirements.

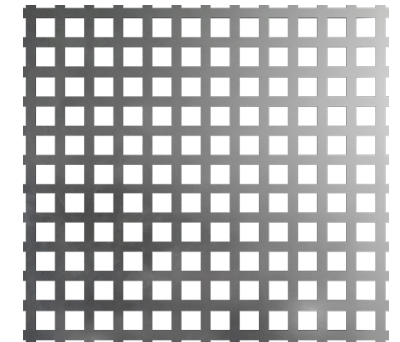
They are available to fit any size panel you require and will provide an aesthetically pleasing, secure and safe mesh panel.

From lightweight decorative elements to load-bearing structural components, perforated metal offers unique opportunities to combine strength, functionality and beauty.

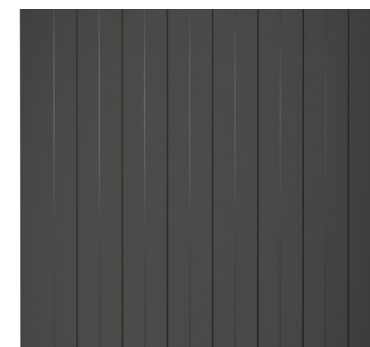
**ROUNDED PERFORATED SHEET**



**PUNCHED PERFORATED SHEET**

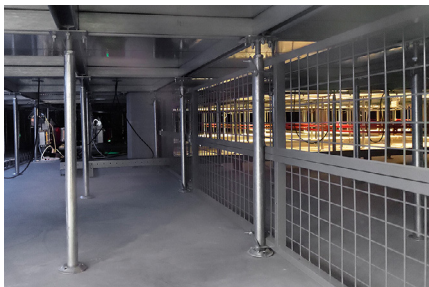
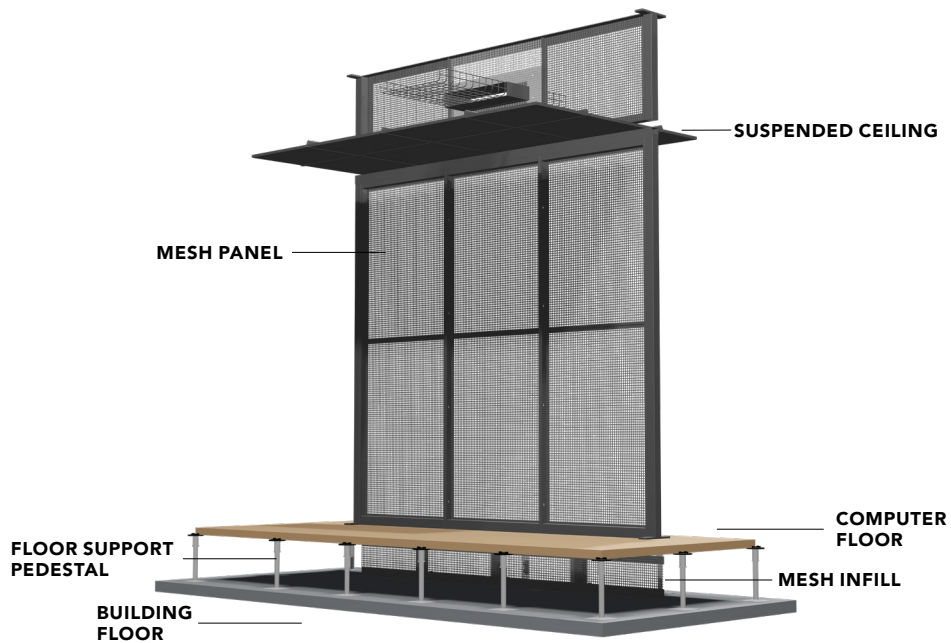


**URSP PANEL**



For concealment of the rooms, you can mix the URSP panel in the bottom with mesh above. The URSP panel has fixed sizes and a thickness of 0.7 mm.

# INNOVATIVE DESIGN.



An example of mesh infill between the building floor and the computer floor.

# SECURE YOUR SERVER ROOM.

Our modular panel systems – with or without mesh ceilings – can be adapted to fit any height. The mesh panels allow proper air circulation and can be built around existing installations and obstacles. Our offer includes complete installations with mesh or steel sheet panels. The latter are primarily used to protect an area from view. There are several solutions to provide a proper floor environment for computers and servers, as well as solutions to protect the area above a suspended ceiling.

**A SAFER TOMORROW**  
**■ SINCE 1955 →**

