

ELECTROMAGNETIC COMPATIBILITY

SOCKET OUTLETS RANGES
FROM 16 A TO 400 A 1000 V



EMC



 **MARECHAL**
ELECTRIC

SUMMARY OFFER

16 A

Page 5



PN7C



PN12C



30 A

Page 6



PN



DN1



DN9C



90 A

Page 7



DS6



150 A

Page 7



DS9



250 A

Page 8



DS2



400 A

Page 9



DS4





WHAT IS EMC?

ElectroMagnetic Compatibility (EMC) is the ability of a product to operate satisfactorily in its electromagnetic environment without introducing electromagnetic interference itself. But what does this mean concretely for the industrial sector? Here are some explanations.

WHERE DO THESE INTERFERENCE COME FROM?

Disruptions can have many causes:

- Natural factors, such as lightning,
- Devices designed to transmit/receive waves, such as mobile phones, radars, radio, television, etc.
- Devices that generate emissions, such as engines, digital circuits, etc.

WHAT ARE THE CONSEQUENCES?

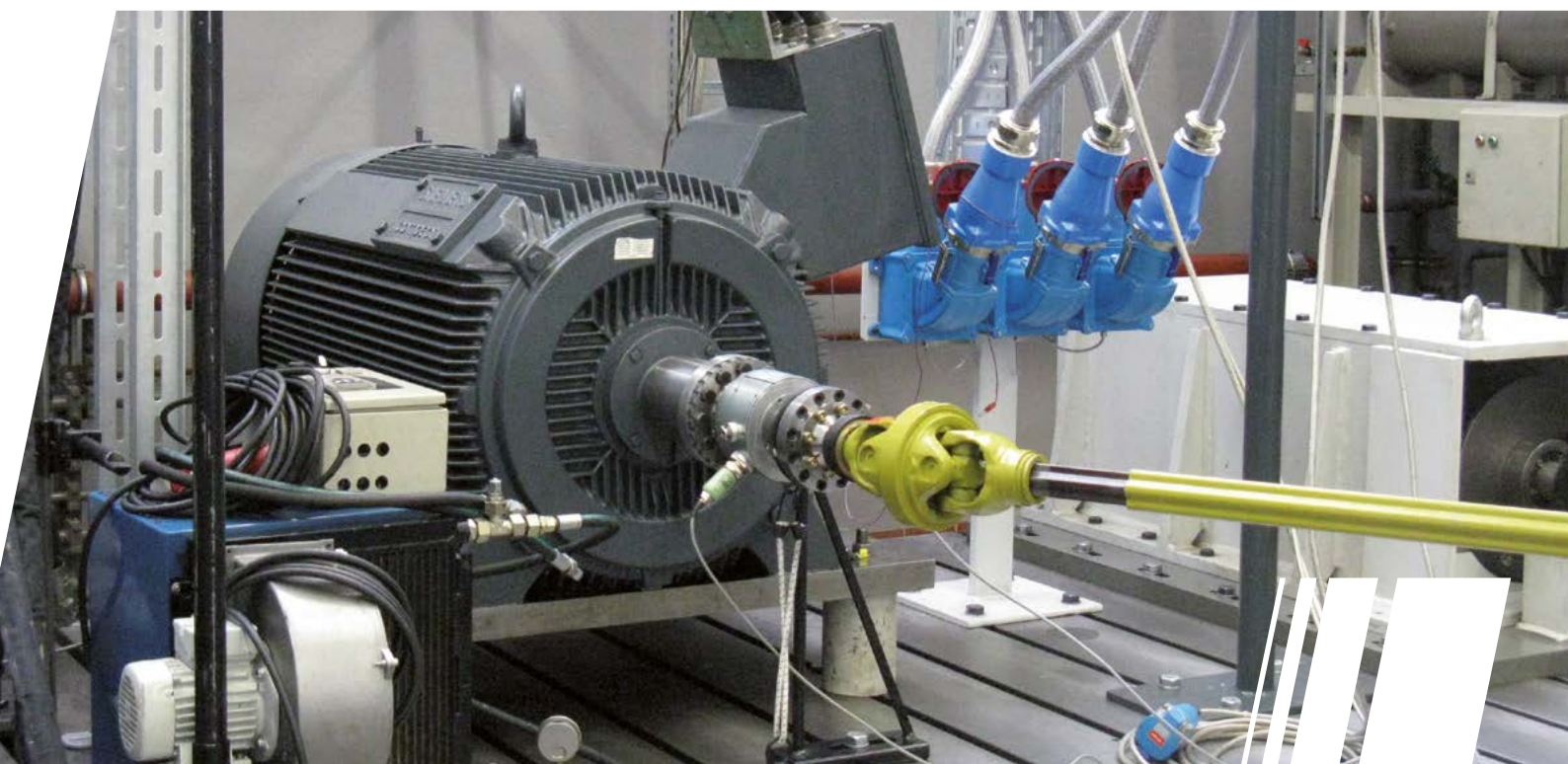
Electromagnetic waves can **disturb a signal**, causing the electrical installation, a robot or machine to malfunction or transmit an incomplete or erroneous message (data, ignition order, etc.) or even **completely block an industrial manufacturing process**.

As a result, these disruptions can impact the proper functioning and productivity of a plant as well as the **safety of the site**.

HOW TO PROTECT YOURSELF FROM ELECTRO-MAGNETIC POLLUTION?

By ensuring the continuity of the shielded cable and thus the non-disruption of signals, using EMC products.

Our range of electrical socket outlets **DECONTACTOR™ EMC** (industrial socket + integrated switch), up to 400 A and 1000 V, is designed for this purpose: to avoid as much as possible accidental production shutdowns due to electromagnetic disturbances.



MAIN ADVANTAGES

The MARECHAL® solutions are made up of a DECONTACTOR™ EMC socket outlets range, specifically designed to this end, up to 400 A and 1000 V. They are thought to avoid as much as possible accidental shutdowns due to electromagnetic interference.

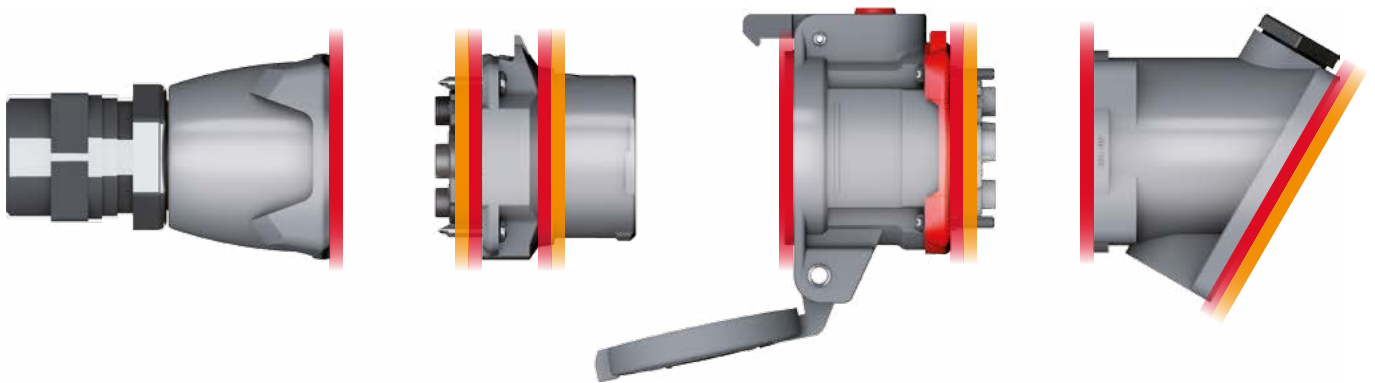
COMPLETE EMC PROTECTION & AUTOMATIC IP65

- Boxes and installation accessories in metal.
- All the mounting surfaces ensure **optimal electrical conductivity**.
- Special seals in metallic material in order to ensure an **IP65 protection (waterproofness)** as well as **optimal EMC performances**. The IP protection degree is obtained automatically when connecting the plug or shutting the lid. No other operation is necessary.
- On request, the plugs and socket outlets can be supplied with armoured cable glands.

POWER AND CONTROL

The **DECONTACTOR™ EMC** auxiliary contacts allow the process control such as connection control, motor thermal control, programmable logic controller (PLC), signal transmission, etc.

The EMC option is a special realisation that allows to **reduce the power (in dB) of their inherent emission of electromagnetic waves**. The electromagnetic compatibility (EMC) trials are carried out on our products according to the IEC 62153-4-5 : 2016 norm. In a frequency range between 30 MHz and 1000 MHz, the EMC option offers a reduction between 30 dB and 70 dB of electromagnetic emissions.



OPTIMAL TRANSMISSION OF POWER

The socket-outlets resist to corrosion and chemical agents.

The silver-nickel butt contact tips ensure a permanent contact pressure and an optimal conductivity even after years of intensive use. Our specifically designed cable terminals provide our socket-outlets with optimal resistance to vibrations (especially preventing cable loosening) and temperature variations as well as outstanding cable anchoring.

- All the external surfaces of the devices are not treated so as to ensure optimal electrical conductivity.
- The conductive sealings are made of either metallic fibers, Monel wires silicone or graphite-loaded wires silicone, ensuring excellent EMC performances..

16-25 A

UP TO 7 PIN



PN7C



EMC



IP66/IP67



METAL



IK08
IK09



-40°C
+60°C

SOCKET-OUTLET female
PN7c (16/25 A)



INLET male
PN7c (16/25 A)



50 V AC	6P (16 A)	09P4060EMC	09P8060EMC
50 V AC	7P (16 A)	09P4070EMC	09P8070EMC
480 V AC	5P+E (25 A)	09P4051EMC	09P8051EMC
480 V AC	6P+E (16 A)	09P4061EMC	09P8061EMC

For all other configurations, options and accessories, contact us or see our online catalog on marechal.com



1-4 mm² flexible
1-6 mm² stranded

16 A

UP TO 12 PIN



PN12C



EMC



IP66/IP67



METAL



IK09



IK08
IK09

SOCKET-OUTLET female
PN12C (16 A)



INLET male
PN12C (16 A)



480 V AC	12 contacts	09A4001EMC	09A8001EMC
	Bag of 13 contacts	01AA213	01AA113

For all other configurations, options and accessories, contact us or see our online catalog on marechal.com



1-2.5 mm² flexible

30 A



PN

COMPACT PLUGS & SOCKETS



SOCKET-OUTLET female
PN (30 A)



INLET male
PN (30 A)



20-24 V AC	2P	09N408AEMC	09N808AEMC
220-250 V AC	1P+N+E	09N4015EMC	09N8015EMC
380-440 V AC	3P+E	09N4013EMC	09N8013EMC
220-250 V AC 380-440 V AC	3P+N+E	09N4017EMC	09N8017EMC
480-500 V AC	3P+E	09N4093EMC	09N8093EMC
480-500 V AC	3P+N+E	09N4097EMC	09N8097EMC



1-6 mm² flexible
1.5-10 mm² stranded

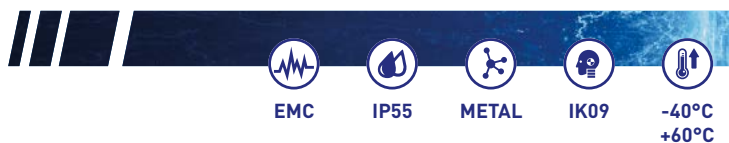
For all other configurations, options and accessories, contact us or see our online catalog on marechal.com

30 A



DN1

DECONTACTOR™ INDUSTRIAL SOCKET WITH INTEGRATED SWITCH



SOCKET-OUTLET female
DN1 (30 A)



INLET male
DN1 (30 A)



20-24 V AC	2P	191408AEMC	191808AEMC
220-250 V AC	1P+N+E	1914015EMC	1918015EMC
380-440 V AC	3P+E	1914013EMC	1918013EMC
220-250 V AC 380-440 V AC	3P+N+E	1914017EMC	1918017EMC
480-500 V AC	3P+E	1914093EMC	1918093EMC
480-500 V AC	3P+N+E	1914097EMC	1918097EMC



2,5-6 mm² flexible
2.5-10 mm² stranded

For all other configurations, options and accessories, contact us or see our online catalog on marechal.com

30 A

MULTI-CONTACT CONNECTORS

UP TO 9 CONTACTS



DN9C



SOCKET-OUTLET female
DN9C (30 A)



INLET male
DN9C (30 A)



50 V AC	6P	1914060EMC	1918060EMC
50 V AC	7P	1914070EMC	1918070EMC
50 V AC	8P	1914080EMC	1918080EMC
50 V AC	9P	1914090EMC	1918090EMC
415 V AC	5P+E	1914051EMC	1918051EMC
415 V AC	6P+E	1914061EMC	1918061EMC
415 V AC	7P+E	1914071EMC	1918071EMC
415 V AC	8P+E	1914081EMC	1918081EMC

For all other configurations, options and accessories, contact us or see our online catalog on marechal.com



1-6 mm² flexible
1.5-10 mm² stranded



The DN9C can also be used as a
DECONTACTOR™

90 A

DECONTACTOR™

INDUSTRIAL SOCKET WITH INTEGRATED SWITCH



DS6



SOCKET-OUTLET female
DS6 (90 A)



INLET male
DS6 (90 A)



220-250 V AC	1P+N+E	3964015EMC	3968015EMC
380-440 V AC	3P+E	3964013EMC	3968013EMC
220-250 V AC 380-440 V AC	3P+N+E	3964017EMC	3968017EMC
660-690 V AC	3P+E	3964193EMC	3968193EMC
380-400 V AC 660-690 V AC	3P+N+E	3964197EMC	3968197EMC
1 000 V AC	3P+E	3964223EMC	3968223EMC
Auxiliaries 5 A/500 V AC	+ 2 contacts	Ref. + 972	Ref. + 972
Auxiliaries 5 A/500 V AC	+ 4 contacts	Ref. + 264	Ref. + 264

For all other configurations, options and accessories, contact us or see our online catalog on marechal.com



10-25 mm² flexible
10-35 mm² stranded

150 A

DS9

DECONTACTOR™

INDUSTRIAL SOCKET WITH INTEGRATED SWITCH



EMC



IP65



METAL



IK09



-40°C
+60°C



AC-22
AC-23

SOCKET-OUTLET female
DS9 (150 A)



INLET male
DS9 (150 A)



220-250 V AC	1P+N+E	3994015EMC	3998015EMC
380-440 V AC	3P+E	3994013EMC	3998013EMC
220-250 V AC 380-440 V AC	3P+N+E	3994017EMC	3998017EMC
660-690 V AC	3P+E	3994193EMC	3998193EMC
380-400 V AC 660-690 V AC	3P+N+E	3994197EMC	3998197EMC
1 000 V AC	3P+E	3994223EMC	3998223EMC
Auxiliaries 10 A/400 V AC	+ 2 contacts	Ref. + 262	Ref. + 262
Auxiliaries 10 A/400 V AC	+ 4 contacts	Ref. + 264	Ref. + 264
Auxiliaries 10 A/400 V AC	+ 6 contacts	Ref. + 976	Ref. + 976



25-70 mm² flexible
25-95 mm² stranded

For all other configurations, options and accessories, contact us or see our online catalog on marechal.com

250 A

DS2

DECONTACTOR™

INDUSTRIAL SOCKET WITH INTEGRATED SWITCH



EMC



IP65



METAL



IK09



-40°C
+60°C



AC-22
AC-23

SOCKET-OUTLET female
DS2 (250 A)



INLET male
DS2 (250 A)



380-440 V AC	3P+E	3924013EMC	3928013EMC
220-250 V AC 380-440 V AC	3P+N+E	3924017EMC	3928017EMC
660-690 V AC	3P+E	3924193EMC	3928193EMC
380-400 V AC 660-690 V AC	3P+N+E	3924197EMC	3928197EMC
1 000 V AC	3P+E	3924223EMC	3928223EMC
Auxiliaries 5 A/400 V AC	3P+N+E + 2 contacts	Ref. + 972	Ref. + 972
Auxiliaries 5 A/400 V AC	3P+E + 4 contacts	Ref. + 174	Ref. + 174
Auxiliaries 5 A/400 V AC	3P+E + 6 contacts	Ref. + 976	Ref. + 976



70-95 mm² flexible
70-120 mm² stranded

For all other configurations, options and accessories, contact us or see our online catalog on marechal.com

400 A

COMPACT HEAVY-DUTY PLUGS & SOCKETS

DS4



EMC



IP65



METAL



IK09



-40°C
+60°C

SOCKET-OUTLET female
DS4 (400 A)



INLET male
DS4 (400 A)



380-440 V AC	3P+E+ 2pil.	3944013EMC	3948013EMC
660-690 V AC	3P+E+ 2pil.	3944193EMC	3948193EMC
1 000 V AC	3P+E+ 2pil.	3944223EMC	3948223EMC



95-150 mm² flexible
95-185 mm² stranded

For all other configurations, options and accessories, contact us or see our online catalog on marechal.com

i

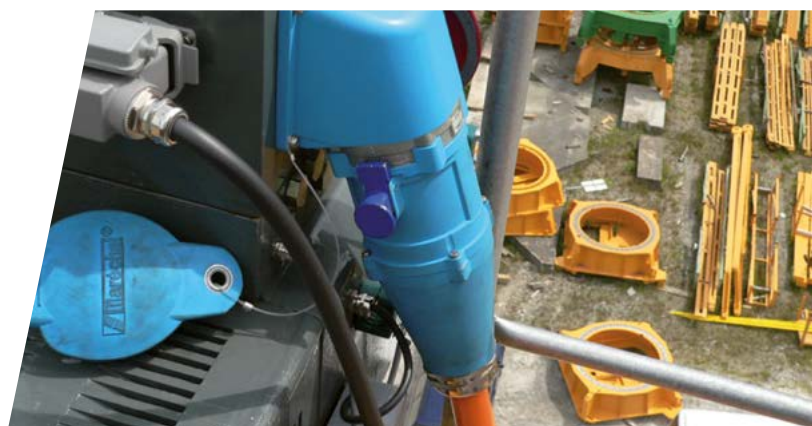
All construction sites with armoured cable don't require EMC plugs. Contact us for more information.

REGULATIONS

THE REGULATIONS REGARDING EMC HAS BEEN DEVELOPPED FROM EUROPEAN DIRECTIVES EXPLAINING THAT:

- The electromagnetic interferences generated must be limited to a level allowing radio devices, telecommunications and other devices to work in compliance with their scope of use.
- The devices must have some intrinsic immunity level against electromagnetic interferences allowing them to work in compliance with their scope of use.

Since December 19th, 2018, a new EMC directive 2014/30/UE has been applicable. It replaces the EMC directive 2004/108/CE.





WEBSITE

- Configure your product specification with our online configurator.
- Retrieve your business contacts.
- Download our documentation related to your field of activity.
- Download our products drawings.
- Learn more about our group.
- Discover our new products.
- Follow our current events.

**FIND ALL INFORMATION
ON OUR WEBSITE:**



marechal.com

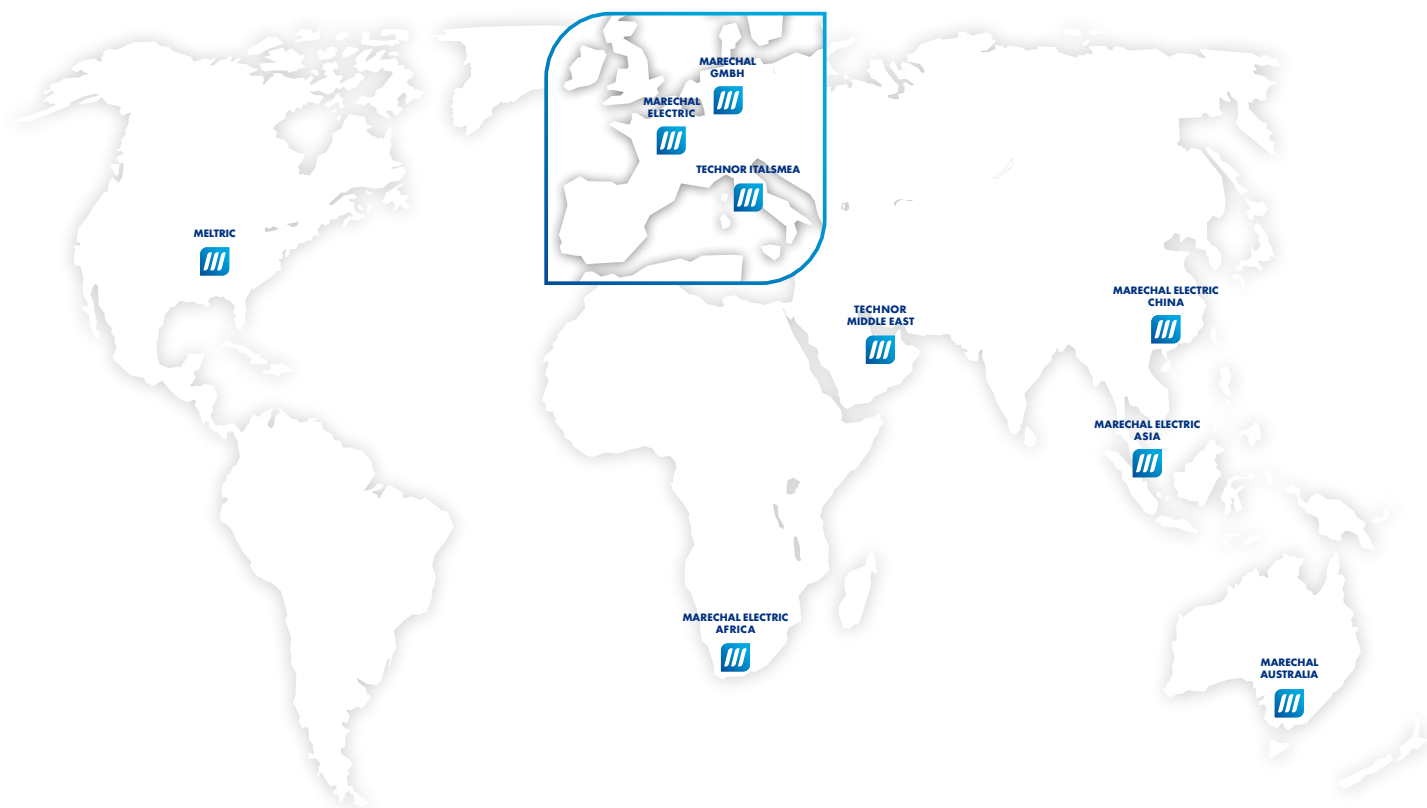


A team dedicated
to your needs

NON CONTRACTUAL DOCUMENT AND PICTURES

All the indications appearing in this catalogue are indicative and could not constitute a commitment on our part.
We reserve the right to alter specifications of our products without any prior notice in our efforts to continuously improve our products features.
For your information, the most updated version is the one of our website marechal.com.

WORLD PRESENCE



MARECHAL ELECTRIC S.A.S (Head Office)

5, avenue de Presles
94417 Saint-Maurice Cedex, FRANCE
Phone : +33 (0)1 45 11 60 00
Fax : +33 (0)1 45 11 60 60
e-mail: contact@marechal.com

Africa SADC area

MARECHAL ELECTRIC AFRICA (PTY) LTD.
PO Box 13875 Witfield 1467
Unit A1 Harvard Lane
Aero Star Business Park
Jet Park Road, Jet Park
South Africa
Tel.: +27 11 894 7226/7/8
Fax: 086 604 1778
e-mail: sales.za@marechal.com

Asia

MARECHAL ELECTRIC Asia Pte Ltd
9 Tagore Lane
#01-05 9@Tagore
Singapore 787472
Tel.: +65 6554 2722
Fax: +65 6455 9077
e-mail: sales.asia@marechal.com

Australia

MARECHAL AUSTRALIA PTY LTD
20 A Technology Circuit
HALLAM VIC 3803
Australia
Tél. : +61 (0)38786 2500
Fax : +61 (0)38786 2511
e-mail : sales@marechal.com.au

China

MARECHAL ELECTRIC (CHINA) Co., Ltd
11 North Xiangshui Road,
West Dayawan District,
Huizhou.P.R.C
Tel/Fax: +86 (0)752-5319536
e-mail: sales.cn@marechal.com

Germany/Austria/Switzerland/ East Europe/Russia

MARECHAL GmbH
Im Lossenfeld 8
D-77731 Willstätt-Sand
Germany
Tel.: +49 (0)7852/91 96-0
Fax: +49 (0)7852/91 96-19
e-mail: info.de@marechal.com

Middle East

Technor Middle East DMCC
Unit No.2101, Fortune Executive
Tower, Plot No T1
Jumeirah Lakes Towers
P.O. Box 392054
Dubai, United Arab Emirates
Tel.: +971 4 362 1418
Fax: +971 4 362 1419
e-mail: sales.me@marechal.com

USA/Canada/Mexico

MELTRIC Corporation
4765 W. Oakwood Park Drive
Franklin WI 53132, USA
Tel.: +1 414 433 2700
Fax: +1 414 433 2701
e-mail: mail@meltric.com

TECHNOR

TECHNOR ITALSMEA S.p.A.
Via Italia 33,
20060 Gessate (MILANO)
Italia
Tél. : +39 02 95 00 151
Fax : +39 02 95 00 15 27
e-mail: sales@italsmea.com