



# PHOENIX

ENGINEERING & MANUFACTURING SOLUTIONS



## ENCLOSURES

ELECTRICAL  
ENCLOSURES AND  
ACCESSORIES

LOCAL CONTROL  
STATIONS AND VISIBLE  
BREAK ISOLATORS

VALUE ADD  
ELECTRICAL  
CONTROL PANELS

TURNKEY SUPPLY  
PACKAGES



## CLASS LEADING ENCLOSURES

Phoenix EMS is a world leader in the manufacture and supply of a diverse range of Electrical Enclosures and value-add solutions for Industry.

All products are designed in-house utilising the latest modelling software and advanced manufacturing techniques using CNC and autonomous machinery including polyurethane gasket machines. Products are manufactured in accordance with ISO9000, AS/NZ4801, ISO4001 to ensure system compliance and world class quality products.

With over 25 years of proven manufacturing capability and a large installed base, Phoenix EMS represents a quality customer choice for both standard and custom enclosure solutions from concept to completion. An extensive distribution network provides national inventory, technical support, customer focus and a partner of trust.

**Phoenix EMS a preferred Enclosure Partner of choice**

# C O N T E N T S

## STAINLESS STEEL ENCLOSURES



STAINLESS STEEL WALL MOUNT

**5**



STAINLESS STEEL FLANGE MOUNT

**6**



STAINLESS STEEL SLOPED ROOF

**7**



STAINLESS STEEL SLOPED ROOF PLUS (GLAND PLATE)

**8**



STAINLESS STEEL HEAVY DUTY SLOPED ROOF

**9**



STAINLESS STEEL TERMINAL BOX

**10**



STAINLESS STEEL TERMINAL BOX SLOPED ROOF

**11**



STAINLESS STEEL PUSH BUTTON STATION

**12**



STAINLESS STEEL PUSH BUTTON STATION SLOPED ROOF

**13**



STAINLESS STEEL FLOOR STANDING

**14**

## MILD STEEL ENCLOSURES



MILD STEEL WALL MOUNT

**19**



MILD STEEL TERMINAL BOX

**21**



MILD STEEL 1000V

**22**

## ACCESSORIES



ENCLOSURE ACCESSORIES  
Inner Door Kits, Plan Pockets, Earth Strap Kit, Door Stays,  
Wall Mounting Brackets, Louvre Plates, Canopies

**23**

## NON-METALLIC ENCLOSURES



NON-METALLIC ABS SCREW TYPE CLEAR

**29**



NON-METALLIC ABS SCREW TYPE GREY

**30**



NON-METALLIC ABS HINGED DOOR CLEAR

**32**



NON-METALLIC ABS HINGED DOOR GREY

**32**



NON-METALLIC POLYESTER GRP LATCH & HINGE TYPE  
Inner doors, Mounting pans Available

**33**

## VENTILATION SYSTEMS & CLIMATE CONTROL



WALL MOUNTED ABS SCREW TYPE AIR CONDITIONERS

**36**



ROOF MOUNTED AIR CONDITIONERS

**36**



FILTER UNITS & FILTER FANS

**36**



ROOF MOUNTED FANS

**37**



THERMOSTATS & HEATERS

**37**





# STAINLESS STEEL ENCLOSURES

THE PHOENIX RANGE OF 316 STAINLESS STEEL ENCLOSURES ARE DESIGNED TO WITHSTAND THE HARSHTEST ENVIRONMENTS ON THE PLANET.

THEY EXCEL IN MINING AND INDUSTRIAL TYPE APPLICATIONS AND FEATURE FULLY WELDED CONSTRUCTION, CONCEALED HINGES AND OFFER A RANGE OF DIFFERENT SIZES AND ACCESSORIES TO FIT ANY APPLICATION.



# STAINLESS STEEL WALL MOUNT

## Features

- IP66
- 316 stainless steel
- Body construction 1.2/1.5mm
- Universal enclosure
- Adjustable inner door kits and escutcheon options
- Concealed stainless steel hinges
- Fully welded construction
- Polyurethane gasket
- 8mm stainless steel square drive spanner lock
- Mounting pan 2mm powder coated white mild steel
- Blind nutsert fasteners
- Stainless steel mounting brackets
- Earth strap kit



## Typical Applications



## Wall Mount Enclosure Selection Table

Model No.	Height	Dimensions (mm)		Useable Depth
		Width	Depth	
PSX202015	200	200	150	132
PSX302015	300	200	150	132
PSX303015	300	300	150	132
PSX403015	400	300	150	132
PSX403020	400	300	200	182
PSX404020	400	400	200	182
PSX406020	400	600	200	182
PSX504020	500	400	200	182
PSX505020	500	500	200	182
PSX604020	600	400	200	182
PSX604030	600	400	300	282
PSX606020	600	600	200	182
PSX606030	600	600	300	282
PSX806020	800	600	200	182
PSX806030	800	600	300	282
PSX1006030	1000	600	300	282
PSX1008030	1000	800	300	282
PSX1206030	1200	600	300	282
PSX1208040	1200	800	400	382

# STAINLESS STEEL FLANGE MOUNT

## Features

- IP66
- 316 stainless steel
- Body construction 1.5mm
- Universal enclosure
- Adjustable inner door kits and escutcheon options
- Flange mounted
- Concealed stainless steel hinges
- Fully welded construction
- Polyurethane gasket
- 8mm stainless steel square drive spanner lock
- Mounting pan 2mm powder coated white mild steel
- Earth strap kit



## Typical Applications



## Flange Mount Enclosure Selection Table

Model No.	Dimensions (mm)			Useable Depth
	Height	Width	Depth	
PSFM302012	300	200	125	107
PSFM404020	400	400	200	182
PSFM504020	500	400	200	182
PSFM604020	600	400	200	182
PSFM606028	600	600	280	262
PSFM806028	800	600	280	262

# STAINLESS STEEL SLOPED ROOF

## Features

- IP66
- 316 stainless steel
- Body construction 1.5mm
- Sloped roof enclosure
- Universal enclosure
- Adjustable inner door kits and escutcheon options
- Flange mounted
- Concealed stainless steel hinges
- Fully welded construction
- Polyurethane gasket
- 8mm stainless steel square drive spanner lock
- Mounting pan 2mm powder coated white mild steel
- Earth strap kit



## Typical Applications



## Sloped Roof Enclosure Selection Table

Model No.	Height	Dimensions (mm)		Useable Depth
		Width	Depth	
PSSR303020	300	300	200	182
PSSR403020	400	300	200	182
PSSR404020	400	400	200	182
PSSR406025	400	600	250	232
PSSR604025	600	400	250	232
PSSR606025	600	600	250	232
PSSR806025	800	600	250	232
PSSR1006035	1000	600	350	332



# STAINLESS STEEL SLOPED ROOF PLUS (GLAND PLATE)

## Features

- IP66
- 316 stainless steel
- Body construction 1.5mm
- Universal enclosure
- Adjustable inner door kits and escutcheon options
- 2mm stainless steel gland plate
- 30 degree sloped roof / 60mm overhang
- Flange mounted
- Concealed stainless steel hinges
- Fully welded construction
- Polyurethane gasket
- 8mm stainless steel square drive spanner lock
- Mounting pan 2mm powder coated white mild steel
- Earth strap kit

## Options

- RAL2000 orange powder coat (CI)
- Brass and aluminium gland plates



## Typical Applications



## Sloped Roof Plus (Gland Plate) Enclosure Selection Table

Model No.	Height	Dimensions (mm)		Useable Depth
		Width	Depth	
PSSRPP222215	220	220	150	132
PSSRP303015	300	300	150	132
PSSRP303020	300	300	200	182
PSSRP403025	400	300	250	232
PSSRP404025	400	400	250	232
PSSRP406025	400	600	250	232
PSSRP507035	500	700	350	332
PSSRP604025	600	400	250	232
PSSRP604035	600	400	350	332
PSSRP606025	600	600	250	232
PSSRP608025	600	800	250	232
PSSRP806025	800	600	250	232
PSSRP601025	600	1000	250	232
PSSRP601035	600	1000	350	332
PSSRP1007025	1000	700	250	232
PSSRP1208025	1200	800	250	232

# STAINLESS STEEL HEAVY DUTY SLOPED ROOF

## Features

- IP66
- 316 stainless steel
- Body construction 2mm
- Universal enclosure
- Adjustable inner door kits and escutcheon options
- Brass gland plate 3mm
- 30 degree sloped roof / 60mm overhang
- Flange mounted
- Concealed stainless steel hinges
- Fully welded construction
- Polyurethane gasket
- Padlockable swing handle
- Mounting pan 2mm powder coated white mild steel
- Earth strap kit
- RAL2000 orange powder coat

## Options

- Available in stainless steel finish on request (CI)



## Typical Applications



## Heavy Duty Sloped Roof Enclosure Selection Table

Model No.	Height	Dimensions (mm)			Useable Depth
		Width	Depth		
PSSRHD404025	400	400	250	232	
PSSRHD705025	700	500	250	232	
PSSRHD705035	700	500	350	332	
PSSRHD1008025	1000	800	250	232	
PSSRHD1008040	1000	800	400	382	

# STAINLESS STEEL TERMINAL BOX

## Features

- IP66
- 316 stainless steel
- Body construction 1.5mm
- Flange mounted
- Fully welded construction
- Captive screws
- Polyurethane gasket
- Mounting pan 2mm powder coated white mild
- Earth strap kit



## Typical Applications



## Terminal Box Selection Table

Model No.	Height	Dimensions (mm)		Useable Depth
		Width	Depth	
PSTB111175	110	110	75	65
PSTB151512	150	150	125	115
PSTB151590	150	150	90	80
PSTB201512	200	150	125	115
PSTB201590	200	150	90	80
PSTB202012	200	200	125	115
PSTB202090	200	200	90	80
PSTB302012	300	200	125	115
PSTB302090	300	200	90	80
PSTB303012	300	300	125	115
PSTB402012	400	200	125	115
PSTB403012	400	300	125	115
PSTB503012	500	300	125	115
PSTB504012	500	400	125	115
PSTB604015	600	400	150	140
PSTB806015	800	600	150	140



# STAINLESS STEEL TERMINAL BOX SLOPED ROOF

## Features

- IP66
- 316 stainless steel
- Body construction 1.5mm
- 30 degree sloped roof / 60mm overhang
- Flange mounted
- Fully welded construction
- Captive screws
- Polyurethane gasket
- Lid fastening post screws into stud
- Mounting pan 2mm powder coated white mild steel
- Earth strap kit



## Typical Applications



## Sloped Roof Terminal Box Selection Table

Model No.	Dimensions (mm)			Useable Depth
	Height	Width	Depth	
PSSRTB151512	150	150	125	115
PSSRTB272212	275	220	125	115
PSSRTB342512	340	250	125	115
PSSRTB303012	300	300	125	115



# STAINLESS STEEL PUSH BUTTON STATION

## Features

- IP66
- 316 stainless steel
- Body construction 1.5mm
- Universal enclosure
- Flange mounted
- Fully welded construction
- Captive screws
- Mounting pan 2mm powder coated white mild steel
- Earth strap kit
- 30mm PB holes
- 25mm conduit entry holes

## Options

- 22mm holes (CI)



## Typical Applications



## Push Button Station Selection Table

Model No.	Dimensions (mm)			No Holes (30mm)	No Conduit Entry Holes	Useable Depth
	Height	Width	Depth			
PSPB1	120	120	84	1	1	74
PSPB2	160	120	84	2	2	74
PSPB3	220	120	84	3	2	74
PSPB4	280	120	84	4	2	74
PSPB5	336	120	84	5	2	74
PSPB6	220	180	84	6	2	74
PSPB8	280	180	84	8	2	74
PSPB9	220	240	84	9	2	74

## Features

- IP66
- 316 stainless steel
- Body construction 1.5mm
- 30 degree sloped roof / 60mm overhang
- Flange mounted
- Fully welded construction
- Captive screws
- Mounting pan 2mm powder coated white mild steel
- Earth strap kit
- 30mm PB holes
- 25mm conduit entry holes

## Options

- 22mm holes (CI)
- Cowling (CI)



## Typical Applications



## Push Button Station Sloped Roof Selection Table

Model No.	Dimensions (mm)			No Holes (30mm)	No Conduit Entry Holes	Useable Depth
	Height	Width	Depth			
PSSRPB1	150	150	125	1	1	115
PSSRPB2	275	220	125	2	2	115
PSSRPB3	275	220	125	3	2	115
PSSRPB4	340	250	125	4	2	115
PSSRPB6	300	300	125	6	2	115
PSSRPB8	300	300	125	8	2	115
PSSRPB9	300	300	125	9	2	115



## Features

- IP66
- 316 stainless steel
- Body construction 1.5mm
- Universal enclosure
- Adjustable inner door kits and escutcheon options
- Concealed stainless steel hinges
- Fully welded construction
- Polyurethane gasket
- Padlockable 3 point locking system
- 3mm aluminium gland plate
- Stainless steel mounting plinth
- Mounting pan 2mm powder coated white mild steel
- Earth strap kit

## Options

- Door rails (CI)
- Gland plates (CI)
- Vent kits (CI)
- Windows (CI)



## Typical Applications



## Floor Standing Enclosure Selection Table

Model No.	Height	Dimensions (mm)		Useable Depth
		Width	Depth	
PSFS1806030	1800	600	300	282
PSFS1806040	1800	600	400	382
PSFS1808040	1800	800	400	382
PSFS1806050	1800	600	500	482
PSFS1808050	1800	800	500	482
PSFS2006050	2000	600	500	482
PSFS2008040	2000	800	400	382
PSFS2008050	2000	800	500	482



VIEW OUR FULL RANGE OF  
**INDUSTRIAL LIGHTING**

1300 0 PHOENIX  
[www.phoenixems.com.au](http://www.phoenixems.com.au)

  
**PHOENIX**  
ENGINEERING • MANUFACTURING SOLUTIONS

# DESIGN OVERVIEW

## PHOENIX EMS ENCLOSURES

Phoenix EMS offers a range of universal enclosures designed for standard applications.

Our range of enclosures incorporates industry-leading design elements and features, a few of these features are outlined below.

### STAINLESS STEEL WALL MOUNT

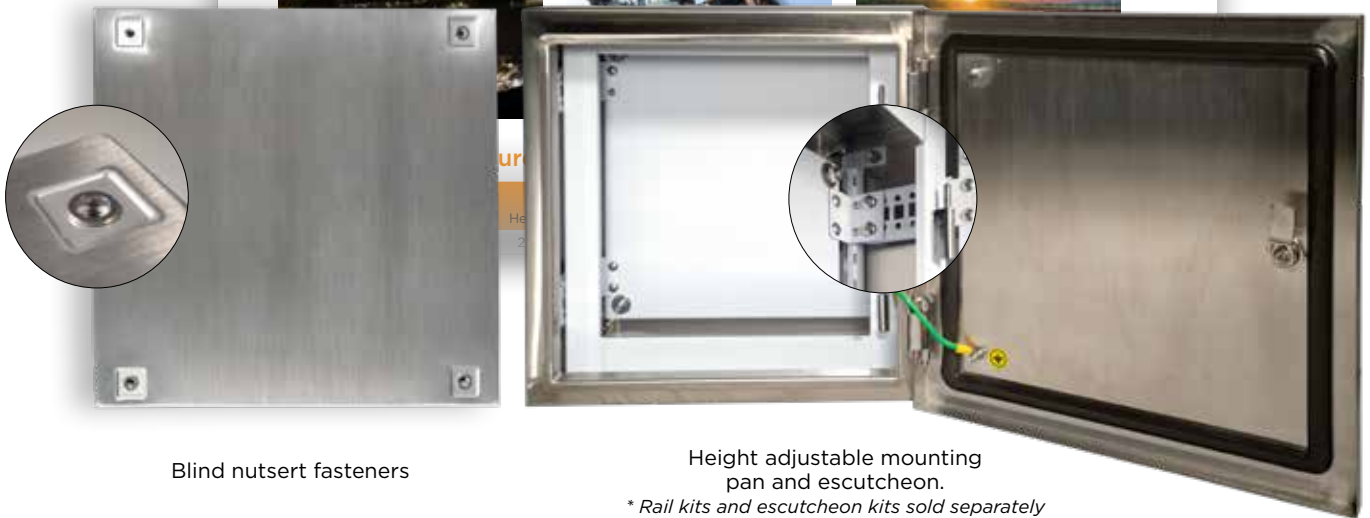


#### Features

- IP66
- 316 stainless steel
- Body construction 1.2/1.5mm
- Universal enclosure
- Adjustable inner door kits and escutcheon options
- Concealed stainless steel hinges
- Fully welded construction
- Polyurethane gasket
- 8mm stainless steel square drive spanner lock
- Mounting pan 2mm powder coated white mild steel
- Blind nutsert fasteners
- Stainless steel mounting brackets
- Earth strap kit



#### Typical Applications



Blind nutsert fasteners

Height adjustable mounting pan and escutcheon.

*\* Rail kits and escutcheon kits sold separately*



All Phoenix EMS mild and stainless steel enclosures come with standard accessories.



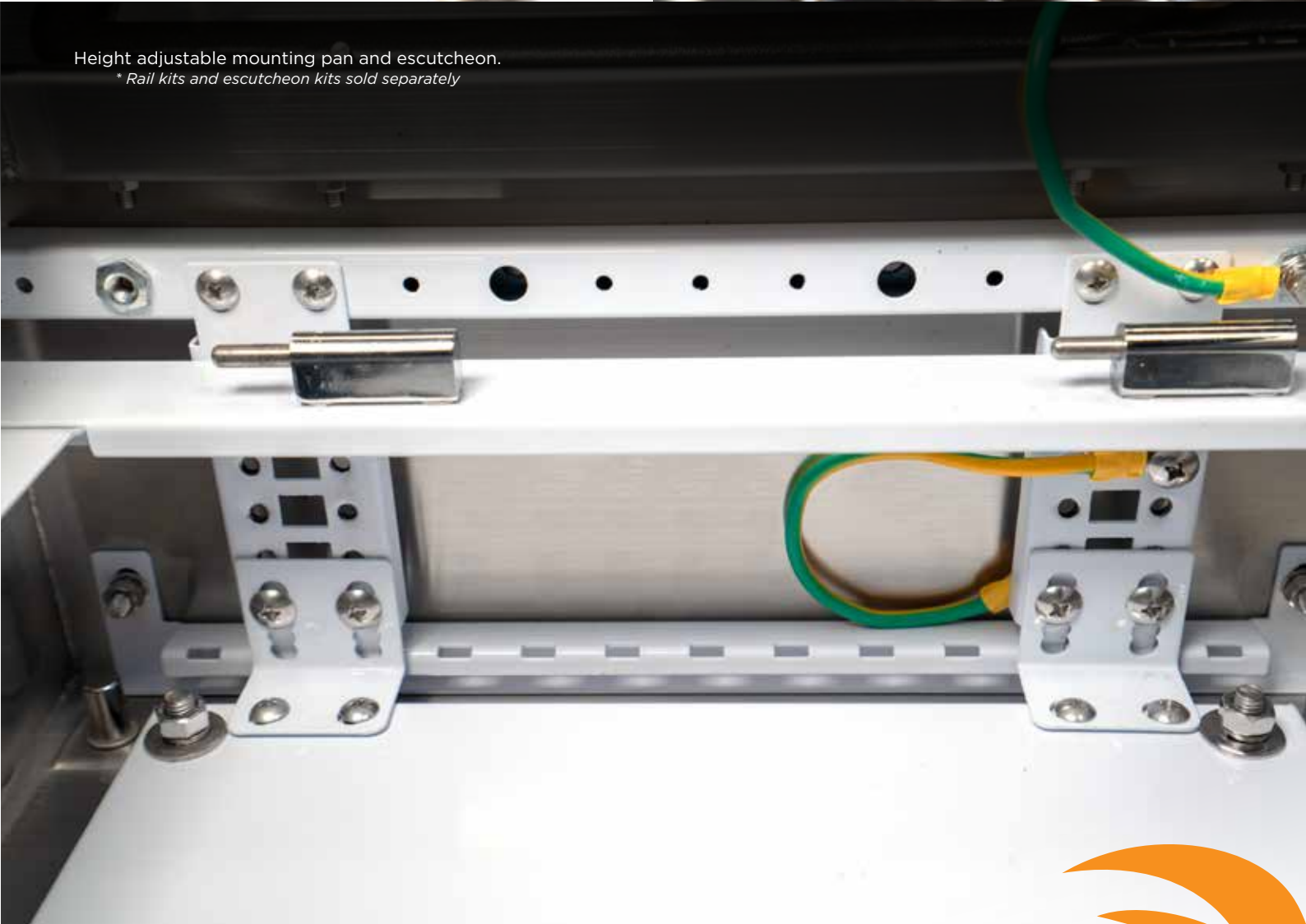
Blind nutsert fasteners for improved sealing included in all our stainless steel and mild steel wall mount enclosures.



Pour in place polyurethane gasket for all Phoenix EMS mild and stainless steel enclosures.



Height adjustable mounting pan and escutcheon.  
*\* Rail kits and escutcheon kits sold separately*





# MILD STEEL ENCLOSURES

PHOENIX EMS OFFERS A RANGE OF MILD STEEL ENCLOSURES WHICH ARE COMPETITIVELY PRICED AND ARE SUITABLE FOR INDUSTRIAL APPLICATIONS.

OUR MILD STEEL ENCLOSURES ARE CONSTRUCTED FROM GALVANIZED STEEL AND ARE AVAILABLE IN A RANGE OF DIFFERENT SIZES AND ACCOMPANYING ACCESSORIES ARE READILY AVAILABLE.

# MILD STEEL GENERAL PURPOSE WALL MOUNT

## Features

- IP66
- Body construction 1.2/1.5mm
- Grey RAL7035 epoxy UV resistant polyester powder coat
- Universal enclosure
- Adjustable inner door kits and escutcheon options
- Concealed hinges
- Fully welded construction
- Polyurethane gasket
- 8mm ZDC square drive spanner lock chrome plated
- 2mm galvanised mounting pan
- Blind nutsert fasteners
- Mild steel mounting brackets
- Earth strap kit



## Typical Applications



## General Purpose Wall Mount Enclosures Selection Table

Model No.	Height	Dimensions (mm)		Useable Depth
		Width	Depth	
PMX302015	300	200	150	132
PMX302515	300	250	150	132
PMX303015	300	300	150	132
PMX403015	400	300	150	132
PMX504016	500	400	160	142
PMX302520	300	250	200	182
PMX303020	300	300	200	182
PMX403020	400	300	200	182
PMX404020	400	400	200	182
PMX504020	500	400	200	182
PMX505020	500	500	200	182
PMX604020	600	400	200	182
PMX605020	600	500	200	182
PMX606020	600	600	200	182
PMX705020	700	500	200	182
PMX806020	800	600	200	182
PMX606030	600	600	300	282
PMX705025	700	500	250	232
PMX806030	800	600	300	282

Available in powdercoat orange RAL2000 on request

## General Purpose Wall Mount Enclosures Selection Table Continued

Model No.	Dimensions (mm)			Useable Depth
	Height	Width	Depth	
PMX808030	800	800	300	282
PMX1006030	1000	600	300	282
PMX1008032	1000	800	320	302
PMX1206030	1200	600	300	282
PMX1208030	1200	800	300	282
PMX806040	800	600	400	382
PMX808040	800	800	400	382
PMX1008040	1000	800	400	382
PMX1206040	1200	600	400	382
PMX1208040	1200	800	400	382
PMX1408040	1400	800	400	382



\*Modular consoles, control desks and custom mild steel enclosures available on request



# MILD STEEL GENERAL PURPOSE TERMINAL BOX

## Features

- IP66
- Body construction 1.5mm
- Grey RAL7035 epoxy UV resistant polyester powder coat
- Captive screws (lid)
- Flange mounted
- Polyurethane gasket
- M6 earth stud
- 2mm galvanised mounting pan



## Typical Applications



## General Purpose Terminal Box Selection Table

Model No.	Height	Dimensions (mm)		Useable Depth
		Width	Depth	
PMTB151580	150	150	80	70
PMTB151512	150	150	120	110
PMTB202080	200	200	80	70
PMTB202012	200	200	120	110
PMTB302012	300	200	120	110
PMTB303012	300	300	120	110
PMTB402012	400	200	120	110
PMTB403012	400	300	120	110
PMTB503012	500	300	120	110
PMTB604012	600	400	120	110

Available in powdercoat orange RAL2000 on request

# MILD STEEL HIGH VOLTAGE 1000V

## Features

- IP66
- 1.5mm construction
- French blue UV resistant powder coated finish
- Chrome plated brass pintle hinges (heavy duty)
- MS800 series swing handles
- 2mm mounting pan powder coated white
- Polyurethane gaskets
- Mounting hardware

## Options

- Gland plates (brass & alloy)
- Top hat stands
- Holes punched
- Mounting stands



## Typical Applications



## High Voltage 1000V Enclosures Selection Table

Model No.	Height	Dimensions (mm)		Useable Depth
		Width	Depth	
PMJ606030	600	600	300	282
PMJ806030	800	600	300	282
PMJ808030	800	800	300	282
PMJ1008030	1000	800	300	282
PMJ10010030	1000	1000	300	282



# ENCLOSURE ACCESSORIES

## ENCLOSURE ACCESSORIES

Brass Glandplates .....	24
Escutcheon Kits .....	24
Wall Mounting Brackets.....	25
Louvre Plates .....	25
A4 Plan Pockets .....	25
Canopies.....	25
Earth Strap Kit.....	25
Door Stays .....	25

## LOCKING SYSTEMS

Locking System and Accessories.....	26
-------------------------------------	----

## Brass Glandplates

Model No.	Dimensions (mm)	
	Height	Width
<b>PEMS-300-BR SERIES 3mm</b>		
PABRGP3015	280	95
PABRGP3020	280	145
PABRGP3025	280	195
PABRGP3030	280	245
PABRGP3035	280	295
PABRGP3040	280	345
<b>PEMS-400-BR SERIES 3mm</b>		
PABRGP4020	380	145
PABRGP4025	380	195
PPABRGP4030	380	245
PABRGP4035	380	295
PABRGP4040	380	345
<b>PEMS-500-BR SERIES 3mm</b>		
PABRGP5020	480	145
PABRGP5025	480	195
PABRGP5030	480	245
PABRGP5035	480	295
PABRGP5040	480	345
<b>PEMS-600-BR SERIES 3mm</b>		
PABRGP6020	580	145
PABRGP6025	580	195
PABRGP6030	580	245
PABRGP6035	580	295
PABRGP6040	580	345
<b>PEMS-700-BR SERIES 3mm</b>		
PABRGP7020	680	145
PABRGP7025	680	195
PABRGP7030	680	245
PABRGP7035	680	295
PABRGP7040	680	345
<b>PEMS-800-BR SERIES 3mm</b>		
PABRGP8020	780	145
PABRGP8025	780	195
PPABRGP8030	780	245
PABRGP8035	780	295
PABRGP8040	780	345
<b>PEMS-1000-BR SERIES 3mm</b>		
PABRGP10020	980	145
PABRGP10025	980	195
PABRGP10030	980	245
PABRGP10035	980	295
PABRGP10040	980	345

## Escutcheon Kits

Model No.	Dimensions (mm)	
	Height	Width
<b>400 SERIES</b>		
PAIDK4040	400	400
PAIDK4050	400	500
PAIDK4060	400	600
<b>500 SERIES</b>		
PAIDK5040	500	400
PAIDK5050	500	500
PAIDK5060	500	600
PAIDK5070	500	700
<b>600 SERIES</b>		
PAIDK6040	600	400
PAIDK6050	600	500
PAIDK6060	600	600
PAIDK6080	600	800
PAIDK60100	600	1000
<b>700 SERIES</b>		
PAIDK7040	700	400
PAIDK7050	700	500
PAIDK7060	700	600
PAIDK7080	700	800
PAIDK70100	700	1000
<b>800 SERIES</b>		
PAIDK8060	800	600
PAIDK8080	800	800
PAIDK80100	800	1000
PAIDK80120	800	1200
<b>1000 SERIES</b>		
PAIDK10050	1000	500
PAIDK10060	1000	600
PAIDK10080	1000	800
PAIDK100100	1000	1000
<b>1200 SERIES</b>		
PAIDK12060	1200	600
PAIDK12080	1200	800
PAIDK120100	1200	1000
<b>1600 SERIES</b>		
PAIDK16060	1600	600
PAIDK16080	1600	800
<b>1800 SERIES</b>		
PAIDK18060	1800	600
PAIDK18080	1800	800
<b>2000 SERIES</b>		
PAIDK20060	2000	600
PAIDK20080	2000	800



## Wall Mounting Brackets

Model No.	Description
PASFM400	Zinc Plated Wall Brackets (x 4)
PASWMB	Stainless Steel wall Brackets (x4)

## Louvre Plates

Model No.	Dimensions (mm)	
	Height	Width
PALP1212	120	120
PALP1616	160	160
PALP2222	220	220
PALP1212SS	120	120
PALP1616SS	160	160
PALP2222SS	220	220

## A4 Plan Pockets

Model No.	Description	Dimensions (mm)	
		Height	Width
PATSA135	Grey A4 Plan Pocket	300	400
PATSA106	Orange A4 Plan Pocket	300	400
PATSS135	Stainless Steel A4 Plan Pocket	300	400

## Canopies

Model No.	Dimensions (mm)		
	Height	Width	Depth
PATT2 03	72	300	200
PATT1 04	72	400	200
PATT2 04	72	400	250
PATT1 05	72	500	200
PATT2 05	72	500	250
PATT4 06	72	600	200
PATT1 06	72	600	250
PATT2 06	72	600	300
PATT3 08	72	800	250
PATT2 08	72	800	300

## Canopies

Model No.	Dimensions (mm)		
	Height	Width	Depth
PAST2 03	72	300	200
PAST2 04	72	400	200
PAST3 04	72	400	300
PAST2 05	72	500	200
PAST2 06	72	600	200
PAST3 06	72	600	300
PAST2 08	72	800	200
PAST3 08	72	800	300

## Earth Strap Kit

Model No.	Description
PAEARTHSK	Earth Strap Kit

## Door Stays

Model No.	Description
PABC0110	Block Door to 90 or 180 Degrees
PAKCR090	Console Jack Kit

## locking systems and spare parts

Model No.	Description
<b>SWING HANDLES</b>	
MS860-1	Stainless steel padlockable swing handle (Handle only) SUS316
MS860-2	Nickel plated zinc alloy padlockable swing handle (Handle only)
S3B6000A	Latch to suit with no offset
S3B4510	Latch to suit with 10mm offset
S1B6800X	Latch to suit Non 3 Point Locking option
LG007-A	Rod to sui Zinc-plated steel, cone-round head with hole - 1000mm
LG007-B	Rod to suit Zinc-plated steel, cone-round head with hole with white PA roller - 1000mm
RG010	Rod guide for door
RG007	ZDC rod connect cover with nylon roller
<b>CYLINDER LOCKS</b>	
MS705-1B	4mm Stainless steel double bit lock (key not included)
MS705-3B	8mm Stainless steel triangular drive spanner lock (key not included)
MS705-12	7mm Chrome plated triangular drive spanner lock (key not included)
MS705-4B	8mm Stainless steel square drive spanner lock (key not included)
MS705-1	4mm ZDC double bit lock ( key not included)bright chrome plated
MS705-3	8mm ZDC triangular drive spanner lock (key not included) bright chrome plated
MS705-4	8mm ZDC square drive spanner lock (key not included) bright chrome plated
MS805	Black powder coated housing Key lock
S1B45Y00002	Latch to suit spanner locks - no offset
S1B45Y10002	Latch to suit spanner locks - 10mm offset
S1B45Y16002	Latch to suit spanner locks - 16mm offset
WP002	Water proof cap to suit spanner locks
K15-1	Key to suit double bit spanner locks
K15-3	Key to suit triangular drive spanner locks
k15-4	Key to suit square drive spanner locks
K040	Key to suit MS805 Key locks
<b>HANDLE LOCKS</b>	
MS315-4-Y	Chrome plated ZDC 'L' handle with insert & padlockable (key included)
MS308-2	Chrome plated ZDC non lockable 'L' handle
MS324-2	Black powder coated ZDC lockable 'T' handle (key included)
MS324-2A	Black powder coated ZDC non lockable 'T' handle
S1B45Y00002	Latch to suit handle locks - no offset
S1B45Y10002	Latch to suit handle locks - 10mm offset
S1B45Y16002	Latch to suit handle locks - 16mm offset
S1B6800X	Latch to suit handle locks
K280	key to suit MS315-4-Y
K140	Key to suit MS324-2



## locking systems and spare parts continued

Model No.	Description
<b>KNOB HANDLE LOCKS</b>	
MS714-2-1	Plastic Knob Handle c/w Black powder coated ZDC housing with latch/tongue BH10mm
MS748-3	Wing Knob lockable with latch/tongue BH10mm with key
MS748-3A	wing Knob Non lockable with latch/tongue BH10mm
<b>CABINET HANDLES</b>	
LS511-B90	Brigh Chrome Plated D handle
LS511S4A090001	Stainless steel D handle 90mm Long
LS509-90	Chrome plated cabinet handle
<b>PINCHWELD RUBBER SEALS</b>	
MFT-015	Rubber - 10 x 6.2mm
MFT-001	Rubber - 10 x 6.2mm
MFT-002	Rubber - 11 x 8mm
MFT-003	Rubber 21.5 x 8mm
MFT-004	Rubber 21 x 9mm
MFT-005	Rubber Seal
<b>CABINET LOCKS</b>	
DK614	Toggle lock
DK619-2-1D	Toggle lock
S870-2	Cabinet Key lock with key K160
<b>HINGES</b>	
CL104	Black powder coated ZDC corner mount hinge
CL204-1	ZDC Pintle Hinge 80mm Long(Bright chrome plated)
CL204-2	Steel pintle hinge with stainless steel cover 95mm Long - Bolt on
CL204-3	Steel pintle hinge with stainless steel cover 95mm Long
CL204-3C	Bright chrome plated ZDC hinge
CL204-3K	Stainless steel pintle hinge 82mm long
CL275-1	Zinc plated steel concealed hinge
CL275-2	Zinc plated steel concealed hinge
CL230-2	Black hinge





# NON-METALLIC ENCLOSURES

THE PHOENIX EMS RANGE OF NON-METALLIC ENCLOSURES COME IN AN ARRAY OF DIFFERENT SIZES AND FORMATS IN BOTH ACRYLONITRILE BUTADIENE STYRENE (ABS) AND GLASS REINFORCED POLYESTER (GRP).

THEY ARE DESIGNED TO BE A COST EFFECTIVE, LIGHTWEIGHT, CORROSION-RESISTANT ALTERNATIVE TO STEEL ENCLOSURES AND CAN BE USED IN INDUSTRIAL, COMMERCIAL AND RESIDENTIAL APPLICATIONS.



# NON-METALLIC ENCLOSURES ABS SCREW TYPE

## Features

- IP66
- ABS/PC construction
- Grey and clear cover options
- IK08 impact resistant
- -40 degrees to 120 degrees celsius
- ANSI/IEC 60529-2004



## Typical Applications



## Grey Cover ABS Screw Type Enclosure Selection Table

Model No.	Dimensions (mm)		
	Height	Width	Depth
PNAG0506	65	50	55
PNAG0609	95	65	55
PNAG1712-1	125	75	100
PNAG0712	125	75	75
PNAG0811	110	80	70
PNAG0811-S	110	80	45
PNAG0813	130	80	70
PNAG0816-S	160	80	55
PNAG0816	160	80	90
PNAG0818	180	80	70
PNAG0818-1	180	80	85
PNAG0825	250	80	70
PNAG0825-1	250	80	85
PNAG1212	125	125	100
PNAG1217	175	125	75
PNAG1423	230	140	90
PNAG1520	200	150	100
PNAG1525	250	150	100
PNAG1525-1	250	150	130
PNAG1717	175	175	75
PNAG1717-1	175	175	100
PNAG1725	250	175	75
PNAG1725-1	250	175	100
PNAG2020	200	200	130
PNAG2020-S	200	200	95
PNAG2819	190	280	130
PNAG2819-1	190	280	180
PNAG2828	280	280	130
PNAG3428	280	340	130
PNAG2834-1	280	380	180
PNAG2838	380	280	130
PNAG2838-1	380	280	180

## Clear Cover ABS Screw Type Enclosure Selection Table

Model No.	Dimensions (mm)		
	Height	Width	Depth
PNAT0506	50	65	55
PNAT0712	125	75	75
PNAT0712-1	125	75	100
PNAT0811	110	80	70
PNAT0811-1	110	80	85
PNAT0813-1	130	80	85
PNAT0818-1	180	80	85
PNAT0825-1	250	80	85
PNAT1212	125	125	100
PNAT1217-1	175	125	100
PNAT1520	200	150	100
PNAT1525	250	150	100
PNAT2020	200	200	130
PNAT1717-1	175	175	100
PNAT1717	175	175	75
PNAT1725-1	250	175	100
PNAT2819-1	190	280	180
PNAT3819	380	190	130
PNAT2834	340	280	130
PNAT2838	380	280	130

## Mounting Pans to Suit AG & AT Enclosures

Model No.	Metal Mounting Plate to Suit AG + AT Enclosures
PN0506	Metal Mounting Plate for AG + AT 0506 Enclosures
PN0712	Metal Mounting Plate for AG + AT 0712 Enclosures
PN0811	Metal Mounting Plate for AG + AT 0811 Enclosures
PN0813	Metal Mounting Plate for AG + AT 0813 Enclosures
PN0816	Metal Mounting Plate for AG + AT 0816 Enclosures
PN0818	Metal Mounting Plate for AG + AT 0818 Enclosures
PN0825	Metal Mounting Plate for AG + AT 0825 Enclosures
PN1212	Metal Mounting Plate for AG + AT 212 Enclosures
PN1217	Metal Mounting Plate for AG + AT 217 Enclosures
PN1417	Metal Mounting Plate for AG + AT 417 Enclosures
PN1423	Metal Mounting Plate for AG + AT 423 Enclosures
PN1520	Metal Mounting Plate for AG + AT 520 Enclosures
PN1525	Metal Mounting Plate for AG + AT 525 Enclosures
PN1717	Metal Mounting Plate for AG + AT 717 Enclosures
PN1725	Metal Mounting Plate for AG + AT 725 Enclosures
PN2020	Metal Mounting Plate for AG + AT 2020 Enclosures
PN2819	Metal Mounting Plate for AG + AT 2819 Enclosures
PN2828	Metal Mounting Plate for AG + AT 2828 Enclosures
PN3428	Metal Mounting Plate for AG + AT 3428 Enclosures
PN3828	Metal Mounting Plate for AG + AT 3828 Enclosures



VIEW OUR FULL RANGE OF  
**HAZARDOUS AREA  
ENCLOSURES**

1300 0 PHOENIX  
[www.phoenixems.com.au](http://www.phoenixems.com.au)

  
**PHOENIX**  
ENGINEERING & MANUFACTURING SOLUTIONS

# NON-METALLIC ENCLOSURES ABS HINGED DOOR

## Features

- IP66
- ABS/PC construction
- Grey and clear door options
- Hinged door (latch and hinge type)
- IK08 impact resistant
- -40 degrees to 120 degrees celsius
- ANSI/IEC 60529-2004



## Typical Applications



## Grey Door ABS Hinged Door Enclosure Selection Table

Model No.	Dimensions (mm)		
	Height	Width	Depth
PNMG2030	300	200	180
PNMG3030	300	300	180
PNMG3040	400	300	180
PNMG4030	300	400	180
PNMG4050	500	400	200
PNMG4060	600	400	200

## Clear Door ABS Hinged Door Enclosure Selection Table

Model No.	Dimensions (mm)		
	Height	Width	Depth
PNMT2030	300	200	180
PNMT3030	300	300	180
PNMT3040	400	300	180
PNMT4030	300	400	180
PNMT4050	500	400	200
PNMT4060	600	400	200

## Mounting Pans to Suit MG & MT Enclosures

Model No.	Metal Mounting Plate to Suit MG + MT Enclosures
PN2030	Metal Mounting Plate for MG + MT 2030 Enclosures
PN3030	Metal Mounting Plate for MG + MT 3030 Enclosures
PN3040	Metal Mounting Plate for MG + MT 3040 Enclosures
PN4030	Metal Mounting Plate for MG + MT 4030 Enclosures
PN4050	Metal Mounting Plate for MG + MT 4050 Enclosures
PN4060	Metal Mounting Plate for MG + MT 4060 Enclosures



# NON-METALLIC POLYESTER GRP LATCH & HINGE TYPE

## Features

- IP66
- Polyester GRP construction
- Grey and clear door options
- Self extinguishing
- UV stabilised
- IK08 impact resistant
- -40 degrees - 120 degrees celsius
- Door hinges 180 degree opening
- Complete with wall mounting bracket (4 pcs / set)
- RAL 7035
- ANSI/IEC 60529-2004



## Typical Applications



## Grey Door Hinged GRP Enclosure Selection Table

Model No.	Dimensions (mm)		
	Height	Width	Depth
PNTIP325	300	250	140
PNTIP43	400	300	200
PNTIP44	400	400	200
PNTIP54	500	400	200
PNTIP64	600	400	230
PNTIP65	600	500	230
PNTIP86	800	600	300

## Clear Window Hinged GRP Enclosure Selection Table

Model No.	Dimensions (mm)		
	Height	Width	Depth
PNTX325	300	250	140
PNTX43	400	300	200
PNTX44	400	400	200
PNTX54	500	400	200
PNTX64	600	400	230
PNTX65	600	500	230
PNTX86	800	600	300

## Mounting Pans to Suit TIP & TX Enclosures

Model No.	Description
PN325	Metal Mounting Plate for TIP & TX Enclosures
PN430	Metal Mounting Plate for TIP & TX Enclosures
PN440	Metal Mounting Plate for TIP & TX Enclosures
PN540	Metal Mounting Plate for TIP & TX Enclosures
PN640	Metal Mounting Plate for TIP & TX Enclosures
PN650	Metal Mounting Plate for TIP & TX Enclosures
PN860	Metal Mounting Plate for TIP & TX Enclosures

## Inner Doors to Suit TIP & TX Enclosures

Model No.	Description	Dimensions (mm)	
		Height	Width
PNTP43	Inner door to suit TIP & TX Enclosures	364	245
PNTP44	Inner door to suit TIP & TX Enclosures	364	345
PNTP54	Inner door to suit TIP & TX Enclosures	464	345
PNTP64	Inner door to suit TIP & TX Enclosures	564	345
PNTP65	Inner door to suit TIP & TX Enclosures	564	445
PNTP86	Inner door to suit TIP & TX Enclosures	764	545



# VENTILATION SYSTEMS & CLIMATE CONTROL

PHOENIX EMS OFFERS COMPREHENSIVE SOLUTIONS FOR FILTERING, COOLING AND HEATING TO PROTECT YOUR EQUIPMENT AND ENSURE ITS OPERATING WITHIN IT'S INTENDED SPECIFICATIONS.

OUR RANGE OF PRODUCTS INCLUDE WALL AND ROOF MOUNTED AIR CONDITIONERS, FILTER UNITS, FILTER FANS ALONG WITH THERMOSTATS AND HEATERS TO HANDLE EXTREME WEATHER AND EXCESSIVE TEMPERATURES.

## Wall Mounted Air Conditioners

Model No.	Description	Features
PVAVC085.000	Air conditioner 850W	230 V/1ph/ 50-60 Hz
PVAVC145.000	Air conditioner 1450W	230 V/1ph/ 50-60 Hz
PVAVC200.000	Air conditioner 2000W	230 V/1ph/ 50-60 Hz
PVAVC400.411	Air conditioner 4000W	415 V/3ph/ 50 Hz

Other wall mount sizes available on request



## Roof Mounted Air Conditioners

Model No.	Description	Features
PVARC050.000	Air conditioner 500W / Roof Mount	230 V/1ph/ 50-60 Hz
PVARC150.000	Air conditioner 1500W / Roof Mount	230 V/1ph/ 50-60 Hz
PVARC200.000	Air conditioner 2000W / Roof Mount	230 V/1ph/ 50-60 Hz
PVARC400.410	Air conditioner 3800W / Roof Mount	415 V/3ph/ 50 Hz

Other roof mount sizes available on request



## Filter Units

Model no.	Description	Features
PVA000BPB	Grill with filter mat	114x114mm
PV1000BPB	Grill with filter mat	150x150mm
PVB000BPB	Grill with filter mat	204x204mm
PV2000BPB	Grill with filter mat	250x250mm
PV3000BPB	Grill with filter mat	320x320mm



## Filter Fans

Model no.	Description	Features
PVA500BPB	Filter fan 24 m3/h- 114x114mm	230V-50/60Hz
PVA524BPB	Filter fan 24 m3/h- 114x114mm	24VDC
PVA525BPB	Filter fan 24 m3/h- 114x114mm	24VAC
PV1600BPB	Filter fan 55 m3/h- 150x150mm	230V-50/60Hz
PV1524BPTB	Filter fan 55 m3/h- 150x150mm	24VDC
PV1534BPTB	Filter fan 55 m3/h- 150x150mm	24VAC
PVB500BPB	Filter fan 110 m3/h-204x204mm	230V-50/60Hz
PVB524BPTB	Filter fan 110 m3/h- 204x204mm	24VDC
PVB525BPTB	Filter fan 110 m3/h- 204x204mm	24VAC
PV2300BPB	Filter fan 120 m3/h-250x250mm	230V-50/60Hz
PV2500BPB	Filter fan 230 m3/h-250x250mm	230V-50/60Hz
PV2600BPB	Filter fan 370 m3/h-250x250mm	230V-50/60Hz
PV3500BPB	Filter fan 500 m3/h-325x325mm	230V-50/60Hz
PV3600BPB	Filter fan 630 m3/h-325x325mm	230V-50/60Hz





## Roof Mounted Fans

Model no.	Description	Features
PNTORR0600BF	Roof exhaust with fan 600 m3/h, Filter IP54	230V-50/60Hz
PNTORR0860BF	Roof exhaust with fan 860 m3/h, Filter IP54	230V-50/60Hz
PNTORR1000BF	Roof exhaust with fan 1000 m3/h, Filter IP54	230V-50/60Hz
PNTORR1450BF	Roof exhaust with fan 1500 m3/h, steel frame, Filter IP54	230V-50/60Hz
PNTORRMETBF	Roof exhaust without fan in painted steel, Filter IP54	GRILL ONLY



## Thermostats

Model No	Description	Features
PVTHR2	Heating Thermostat NC 0-60 °C	34x68x38mm
PVTHV2	Cooling Thermostat NO 0-60 °C	34x68x38mm



## Heaters

Model No.	Description	Features
<b>HEATER SHT-W PTC HEATERS, HARDWIRED</b>		
PVSHT15W	Heater 15W hardwired	50x80x50mm
PVSHT25W	Heater 25W hardwired	50x80x60mm
PVSHT50W	Heater 50W hardwired	50x80x80mm
<b>HEATER SHT PTC HEATERS, TERMINAL CONNECTION</b>		
PVSHT25	Heater 25W terminals	50x80x90mm
PVSHT50	Heater 50W terminals	50x80x110mm
PVSHT100	Heater 100W terminals	90x80x110mm
PVSHT150	Heater 150W terminals	90x80x220mm
<b>FAN HEATER FSHT FAN ASSISTED, RESISTOR HEATERS</b>		
PVFSHT250	Fan Heater 250W -230 V	112x82x135mm
PVFSHT500	Fan Heater 500W -230 V	112x82x165mm
PVFSHT750	Fan Heater 750W -230 V	112x82x225mm
<b>FAN HEATER FPH FAN ASSISTED PTC HEATERS</b>		
PVFPH1200.01	Fan Heater 1200W -230 V w/electronic control	95x160x120



Note: Phoenix EMS accepts no responsibility for any omissions or errors published in this catalogue.



## INDUSTRY APPROVED VISIBLE BREAK ISOLATORS & LOCAL CONTROL STATIONS

Phoenix EMS is a market leader in enclosures specialising in the design and manufacture of custom local control stations and isolators including an extensive range of visible break solutions. Our high quality, fully engineered, customised solutions are the very best the industry has to offer.

Phoenix EMS LCS are specified and installed in the following sectors:

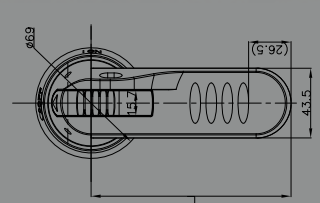
- Mining - coal & metalliferous
- Stackers/reclaimers/ship loaders
- Materials handling
- Chemical
- Concrete & quarries
- Heavy industry
- Petrochemical/oil and gas
- Fuel farms
- Reclaim tunnels (DIP)
- Coal handling & processing plants
- Mine infrastructure
- Water & sewerage
- Steelmaking
- Lithium & specialised metals

### GENERAL SPECIFICATIONS

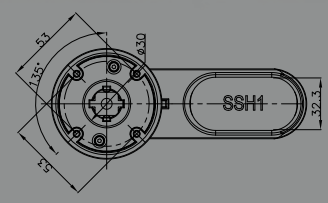
- Isolators up to 3000A
- IP66 rating
- Construction 1.5mm - 2mm
- 316 SS (other options available upon request)
- 37 degree sloped roof versions
- 2B or N4 finish
- Viewing windows
- Phoenix stainless steel front & side mount handles to suit all brands of isolators ABB/Schneider/Legrand/Dumeco/Socomec
- LED lighting solutions
- Polyurethane gaskets
- Rear turn busbar options for large cables
- Sized for ease of site installation
- Custom designs to suit client specifications
- Gland plates available in all materials
- Complete turnkey wired solutions
- Panels can be provided to suit site preferred equipment



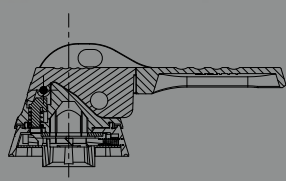
**PHOENIX STAINLESS STEEL SIDE MOUNT & FRONT MOUNT HANDLE CONFIGURATIONS**



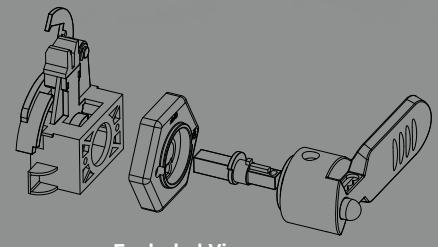
Front View



Back View



Side View



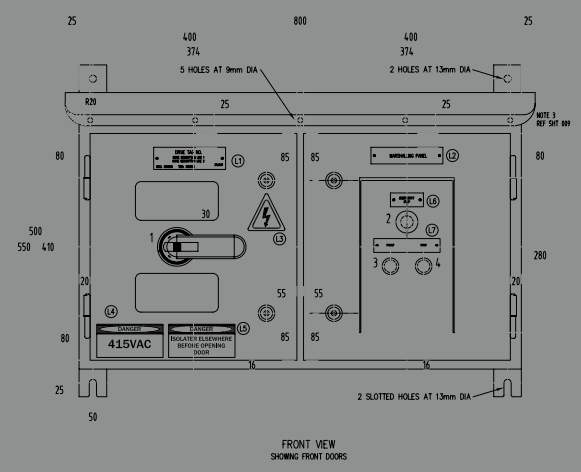
Exploded View

Phoenix EMS offers a high-quality range of stainless steel isolator handles that conforms to all lockout requirements and are available in both front and side mount options. Phoenix EMS handles are designed to fit the following switches: Dumeco, ABB, Socomec, Legrand, Schneider

**ENGINEERED PROJECT PACKAGES**

Phoenix EMS provides an end-to-end in-house engineering service that specialises in the design of local control stations and isolators to meet customer and application requirements. Phoenix EMS also offers custom turnkey design packages to suit every customer and application.

- LCS/isolator specifications
- Engineering design
- Detailed drawings
- Bill of materials (BOM's)
- Manufacturing
- Electrical wiring
- Testing and commissioning
- Project documentation













VIEW OUR FULL RANGE OF  
**INDUSTRIAL LIGHTING**

1300 0 PHOENIX  
[www.phoenixems.com.au](http://www.phoenixems.com.au)

  
**PHOENIX**  
ENGINEERING • MANUFACTURING SOLUTIONS



## UNRIVALLED ELECTRICAL ENCLOSURES, INDUSTRY LIGHTING & VALUE-ADD SOLUTIONS

### Industry Leaders in Enclosures

Phoenix EMS are a world leader in the manufacture and supply of a diverse range of Electrical Enclosures and value add solutions for Industry. With over 25 years of proven manufacturing capability and a large installed base Phoenix EMS represents a quality customer choice for both standard and custom enclosure solutions from concept to completion.



**Distribution Partner**

**1300 36 26 26**

**[sales@colterlec.com.au](mailto:sales@colterlec.com.au)**

**[www.colterlec.com.au](http://www.colterlec.com.au)**